

The Italian Context

- Mammographic screening is a Basic Healthcare Parameter (LEA) since 2001
- Guidelines are provided by the Minister of Health - Department of Prevention in agreement with Regional Governments
- Regional Governments are responsible for organization, management and quality assurance of screening programmes
- Since 2004 the National Centre for Screening Monitoring (ONS) has been charged with monitoring and promoting screening programmes nationwide

- **REGIONAL ORGANISATION**
- **TARGET POPULATION: 50-69 YEARS**
(one Region from 45, several till 74)
- **SCREENING INTERVAL: 2 YEARS**
- **TWO VIEWS MX**
- **DOUBLE READING**
- **TEST FREE OF CHARGE**
- **FIXED APPOINTMENT**

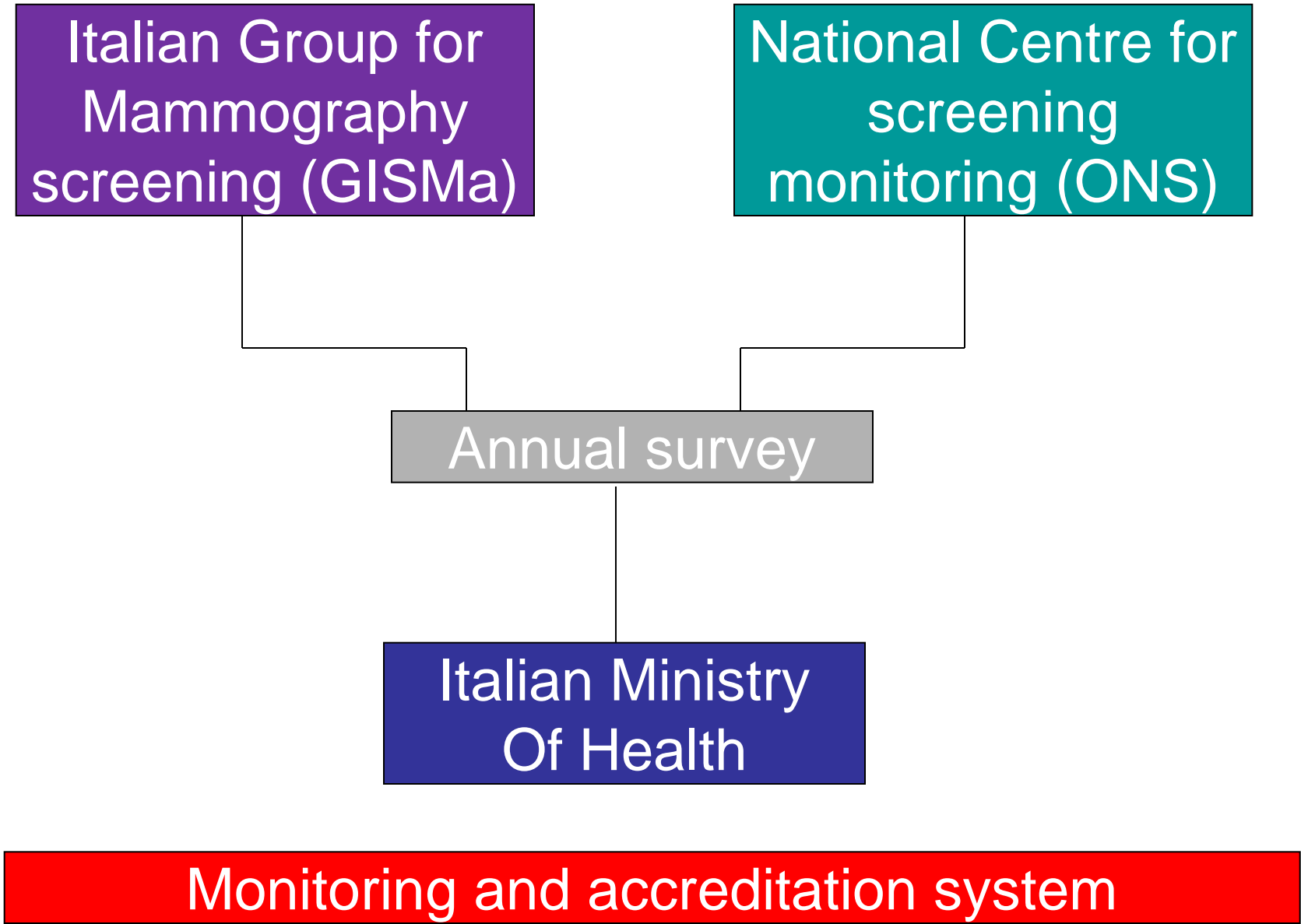
Italian Group for
Mammography
screening (GISMa)

National Centre for
screening
monitoring (ONS)

Annual survey

Italian Ministry
Of Health

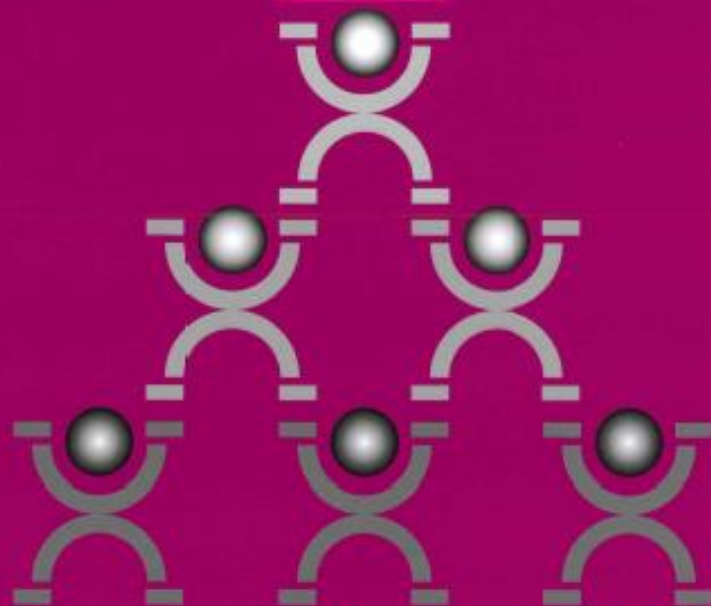
Monitoring and accreditation system



e&po

EPIDEMIOLOGIA
& PREVENZIONE

Rivista dell'Associazione
Italiana di epidemiologia
ANNO 36 (E) NOVEMBRE-DICEMBRE 2012
SUPPLEMENTO 1



Osservatorio Nazionale Screening

Decimo Rapporto

The National Centre for Screening Monitoring

Tenth Report

inferenze



OSSERVATORIO
NAZIONALE
SCREENING

ccm

MINISTERO DELLA SALUTE
CENTRO NAZIONALE PER LA PREVENZIONE
E IL CONTROLLO DELLE MALATTIE



CONFERENZA DEI PRESIDENTI
DELLE REGIONI
E DELLE PROVINCE AUTONOME

GSCC
Gruppo Nazionale
Screening
Cervicocarcinoma

GSColl
Gruppo Italiano
Screening
Colorettale

GSMa
Gruppo Italiano
Screening
Mammografico

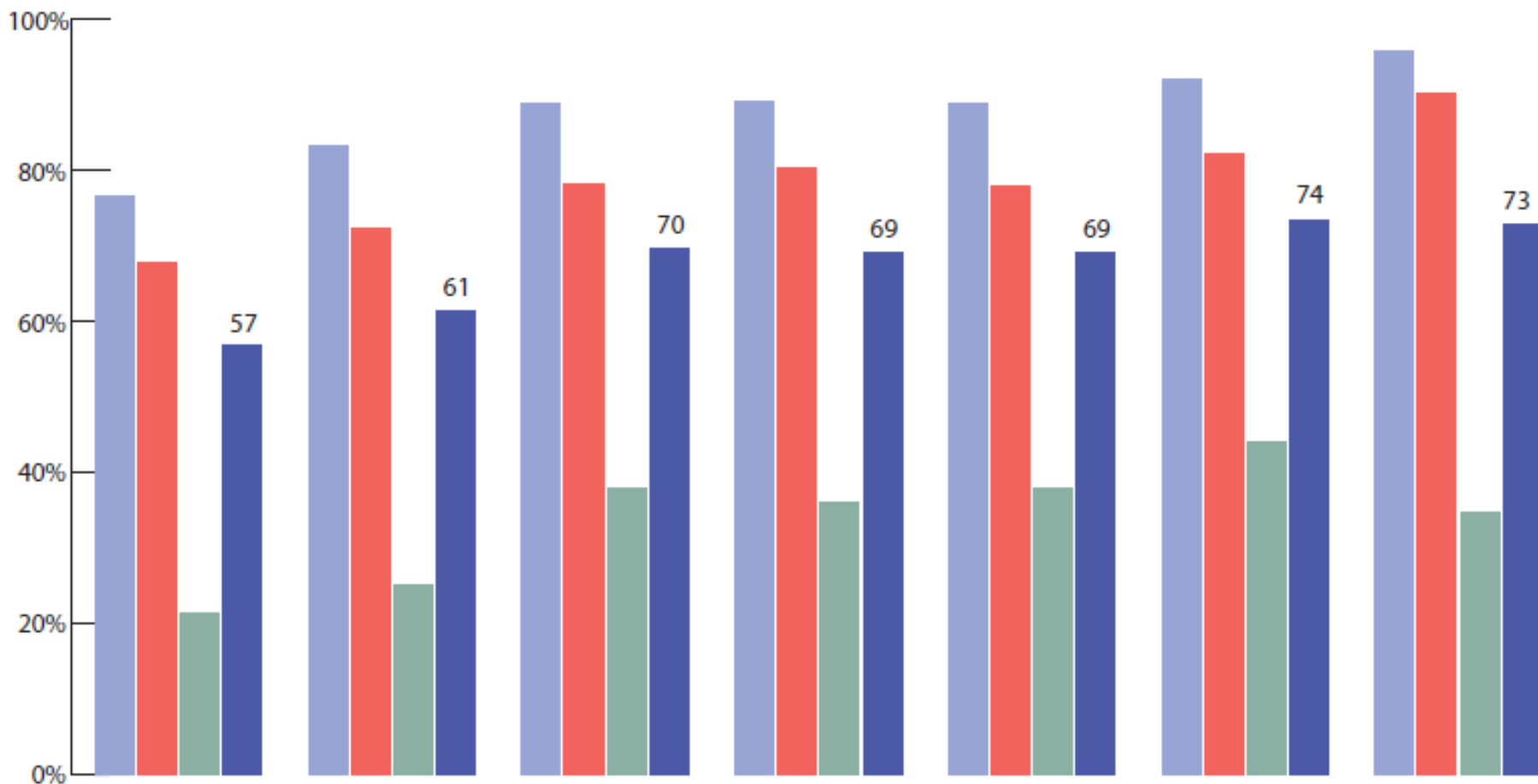
Figura 3.

Estensione effettiva dello screening mammografico per area geografica
(% di donne di età 50-69 anni che ricevono la lettera di invito - 2006-2012)

Fonte: survey Ons

Nord Centro Sud Italia

Coverage on mammographic screening in 2012

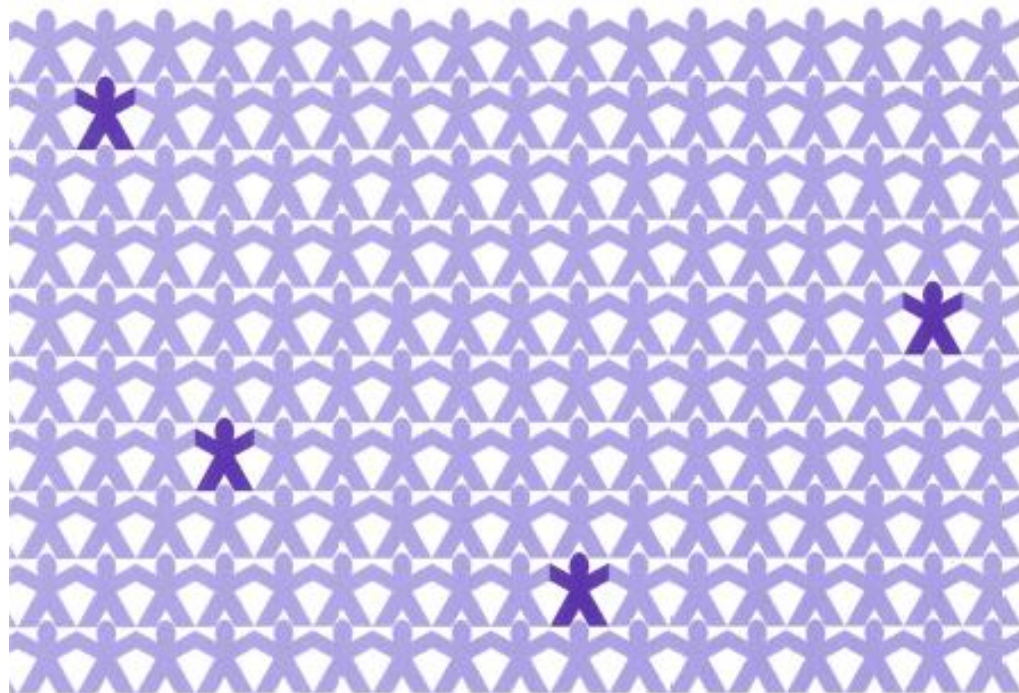


2012

“European estimates of the mammography screening balance sheet of benefits and arms: challenges for communication and research “

- ONS supported the Italian project “ Progetto IMPATTO” on evaluation of mortality and overdiagnosis in Mammographic screening
- ONS supported the effort of EUROSCREEN => an european group of experienced professionals in evaluation screening programme
- Evaluation of impact of the screening using the best methodological approaches :
 - Benefits (reduction in mortality , reduction af advanced disease ..)
 - Side effects (false positives , overdiagnosis Overtreatment...)

Journal of Medical Screening



Royal Society of Medicine Press

At the end..

- the advantages outweigh the disadvantages.
- The mammographic screening programme shall continue
- the screening programme can be improved on several issues.

Challenges

- To improve the methodology for evaluating the impact of screening programmes
- To decrease overdiagnosis
- To disentangle overdiagnosis from overtreatment
- To improve communication on pros and cons of screening in order to eliminate barriers for an informed choice